

# Wind Speed Sensor

## AT-FST200—201 Wind Speed Sensor

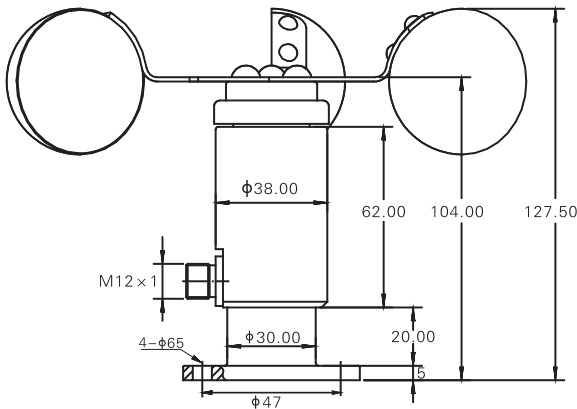
Features	■ Excellent resistance against impact, overload, shock and erosion
	■ Small and exquisite, easy to take, simple to install
	■ Alloy material finish, reasonable structure design and nice outlook quality
	■ Stainless steel Wind cup, anti-wind load can reach 70m/s

Applicable Scope	■ Working aloft testing and control
	■ Engineering machine testing and control
	■ Weather station and environment protection testing and control
	■ Port and wharf environment testing and control
	■ Other industrial automation about wind speed and direction testing and control



Project	Parameter	
Technical Index	Output	Pulse signal ( HZ ) 0-5VDC 4-20mA
	Working Voltage	5VDC 24VDC 12~36VDC(common 24VDC)
	Testing range	0.5m/s~50m/s
	Start wind speed	≤0.5m/s
	Accuracy	± 0.5m/s(<5m/s)
		± 3% FS(≥5m/s)
	Working Environment	Temperature: -20°C~+85°C Humidity≤95% RH
	Limit wind speed	Max: 70m/s 30min
	Electrical connection	M12
Environmental Protection	IP65	

Dimension



M12 Connection	Potential Lead	Output Signal	Serial NO	Wiring Method	
	3-Wire	Current mode	1	+Vcc	Brown
			2	+Vout	White
			3	GND	Blue
			4	PE	Black
	3-Wire	Voltage mode	1	+Vcc	Brown
			2	+Vout	White
			3	GND	Blue
			4	PE	Black
	3-Wire	Pulse mode	1	+Vcc	Brown
			2	+P ovt	White
			3	GND	Blue
			4	PE	Black